

MOLECULAR DIAGNOSTICS

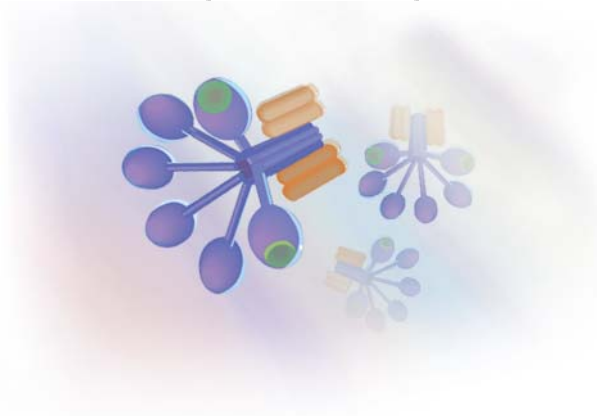
IMMUNOASSAYS

DHI CELL CULTURE & FLUORESCENT TESTS

RESEARCH

CUSTOMER SUPPORT

CAREERS



Monoclonal Antibody to Human C3a

For **Research Use Only**. Not for use in diagnostic procedures.

A murine monoclonal antibody to the human C3a domain of C3.

This monoclonal antibody was raised against purified human C3. It is specific for an antigen expressed on the C3a domain of C3 and therefore reactive to C3 and C3a.

Quidel's C3a monoclonal antibody has been used in a variety of experimental techniques including EIA and Western Blot. Please contact Quidel Technical Support for details on these or other applications. Because it is not specific for a neo-epitope on C3a, it may not be suitable for all EIA applications.

References

Tamerius, J.D., Pangburn, M., et al. Detection of a neoAntigen on human iC3b and C3d by monoclonal Antibody, J. Immunol. 135:2015, 1985.

Tamerius, J.D., Pangburn, M., et al. Selective inhibition of functional sites of cell bound C3b by hybridoma derived antibodies, J. Immunol 128:512, 1982.

- HOW TO BUY
- REQUEST INFO
- REIMBURSEMENT

[Home](#) » [Monoclonal Antibody to Human C3a](#)

- Research**
- Disease States & Conditions
- Cancer
- Inflammatory & Autoimmune
- Metabolic Syndrome
- Osteoporosis
- Explore All Our
- Bone Health Reagents
- Complement Depleted Sera
- Complement Proteins
- Complement Reagents
- ELISA Kits
- Monoclonal Antibodies
- Polyclonal Antisera
- Browse by Brand
- MicroVue
- BioPorto
- Pathway
- TECOmedical
- Immutopics

Features & Benefits x

Feature	Benefit
---------	---------

Product Specifications +

Ordering Information x

Catalog Number	Kit Size / Case Size
A203	100 µL

Product Documentation x

Product documentation is best viewed in Internet Explorer

- SDS
- Technical Data Sheet

HOW TO BUY

EVALUATE A KIT

Research

Bone Health Reagents
Complement Depleted Sera
Complement Proteins

Cancer Research Products
Inflammatory & Autoimmune
Metabolic Syndrome

Molecular Diagnostic Assays

Immunoassay Kits

How to Buy

Reimbursement

About Quidel

Complement Reagents
ELISA Kits (EIA)
Monoclonal Antibodies
Polyclonal Antisera

Osteoporosis (Bone&Health)
MicroVue
TECOmedical

**DHI Cell Culture &
Fluorescent Antibody Tests**

Locations & Directions
Contact Us
Quidel News

Customer Support

Careers

Quidel Corporation Headquarters:

12544 High Bluff Drive, Suite 200, San Diego, CA 92130, USA
858.552.1100 Tel 858.453.4338 Fax
Copyright © 2008-2019 Quidel Corporation. All rights reserved.

[Website Terms and Conditions](#) • [Privacy Policy](#) • [Site Map](#)

LEGAL NOTICE

By accessing, browsing and/or using this website, you acknowledge that you have read, understood, and agree to be bound by Quidel's [Website Terms and Conditions](#), [Privacy Policy](#) and to comply with all applicable laws and regulations. If you do not agree to these terms, do not use the website. Additionally, this website contains information on products that is targeted to many different audiences and could contain product details or information otherwise not accessible or valid in your country. Please be aware that we do not take any responsibility for your accessing such information that may not comply with any legal process, regulation, registration or usage in the country of your origin.