

# Smart Dataset XML Viewer

Step 1: Download viewer from:

<https://sourceforge.net/projects/smart-sds-xml-viewer/files/>

Provider: XML4Pharma / Jozef Aerts

Due to preparation time constraints, no life show could be offered to the audience in Eschborn

Pre-conditions: Data available in xml format – does not work with SAS transport files  
Define available in xml format, versions 1 or 2

1. define.xml for EX [see page 2]
2. dataset.xml for EX [see page 3]

CDISC User group Meeting Eschborn  
February 14th, 2017

Kurt Hellstern  
kurt.hellstern@hands-on.ch

# Smart Dataset XML Viewer

```
<?xml version="1.0" encoding="UTF-8"?>
```

```
<!--
```

```
*****
```

```
Written by XClinical Tabulator Editor  
Author: Kurt Hellstern <kurt.hellstern@hands-on.ch>  
Info:
```

```
*****
```

```
-->
```

```
<!-- ***** -->
```

```
<!-- Filetype: "tabulator.xml" (extension to "define.xml") -->
```

```
<!-- ***** -->
```

```
<ODM xmlns="http://www.cdisc.org/ns/odm/v1.2" xmlns:xsi="http://www.w3.org/2001/XMLSchema-instance" x
```

```
<Study OID="Studie01">
```

```
<GlobalVariables>
```

```
<StudyName>HO000001</StudyName>
```

```
<StudyDescription>Single-center, double-blind, placebo-controlled, randomized, single-ascending
```

```
<ProtocolName>HO000001</ProtocolName>
```

```
</GlobalVariables>
```

```
<MetaDataVersion OID="MDV.SDTM.EX.1.0" Name="Meta data version SDTM EG domain mapping 1.0" Descri
```

```
<ItemGroupDef OID="SDTM_EX" Repeating="Yes" def:ArchiveLocationID="Location.SDTM_EX" Name="EX"
```

```
<ItemRef ItemOID="STUDYID" OrderNumber="1" Mandatory="No" Role="Identifier"/>
```

```
<ItemRef ItemOID="DOMAIN" OrderNumber="2" Mandatory="No" Role="Identifier"/>
```

```
<ItemRef ItemOID="USUBJID" OrderNumber="3" Mandatory="No" Role="Identifier"/>
```

```
<ItemRef ItemOID="EXSEQ" OrderNumber="4" Mandatory="No" Role="Identifier"/>
```

```
<ItemRef ItemOID="EXSPID" OrderNumber="5" Mandatory="No" Role="Identifier"/>
```

```
<ItemRef ItemOID="EXTRT" OrderNumber="6" Mandatory="No" Role="Topic"/>
```

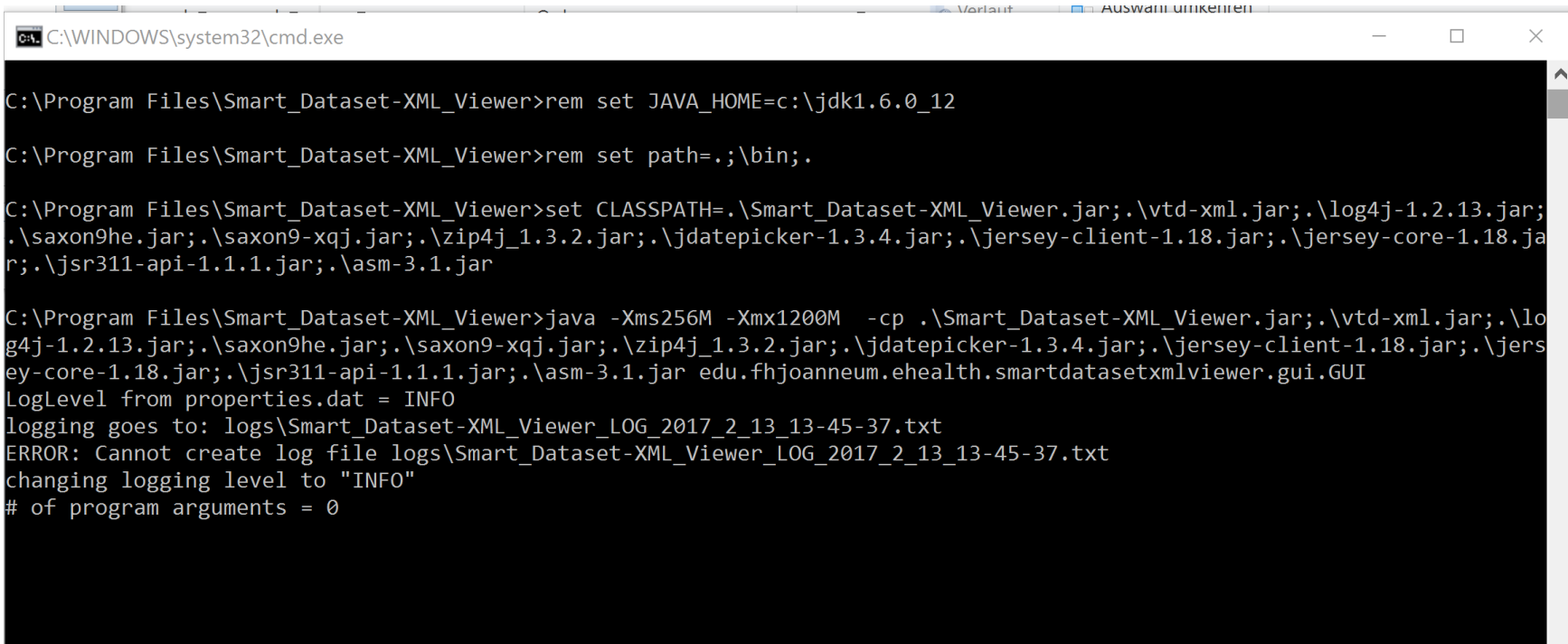
```
<ItemRef ItemOID="EXDOSE" OrderNumber="8" Mandatory="No" Role="Record Qualifier"/>
```

```
<?xml version="1.0" encoding="UTF-8"?>
<ODM xmlns:data="http://www.cdisc.org/ns/Dataset-XML/v1.0"
      xmlns="http://www.cdisc.org/ns/odm/v1.3"
      data:DatasetXMLVersion="1.0.0"
      ODMVersion="1.3.2"
      FileType="Snapshot"
      FileOID="SDTM-XML"
      CreationDateTime="2012-12-08T23:06:03.046+01:00">
<ClinicalData StudyOID="LZZT" MetaDataVersionOID="CDISC.SDTM.3.1.0">
  <ItemGroupData data:ItemGroupDataSeq="1" ItemGroupOID="EX">
    <ItemData ItemOID="EX.STUDYID" Value="CDISCPILOT01"/>
    <ItemData ItemOID="EX.DOMAIN" Value="EX"/>
    <ItemData ItemOID="EX.USUBJID" Value="01-701-1015"/>
    <ItemData ItemOID="EX.EXSEQ" Value="1"/>
    <ItemData ItemOID="EX.EXTRT" Value="PLACEBO"/>
    <ItemData ItemOID="EX.EXDOSE" Value="0"/>
    <ItemData ItemOID="EX.EXDOSU" Value="mg"/>
    <ItemData ItemOID="EX.EXDOSFRM" Value="PATCH"/>
    <ItemData ItemOID="EX.EXDOSFRQ" Value="QD"/>
    <ItemData ItemOID="EX.EXROUTE" Value="TRANSDERMAL"/>
    <ItemData ItemOID="EX.VISITNUM" Value="3"/>
    <ItemData ItemOID="EX.VISIT" Value="BASELINE"/>
    <ItemData ItemOID="EX.VISITDY" Value="1"/>
    <ItemData ItemOID="EX.EXSTDTC" Value="2014-01-02"/>
    <ItemData ItemOID="EX.EXENDTTC" Value="2014-01-16"/>
    <ItemData ItemOID="EX.EXSTDY" Value="1"/>
  </ItemGroupData>
</ClinicalData>
</ODM>
```

# Smart Dataset XML Viewer

Step 2: Start «Smart\_Dataset-XML\_Viewer.bat» in the root folder

➔ The program starts in a good old window...



```
C:\WINDOWS\system32\cmd.exe

C:\Program Files\Smart_Dataset-XML_Viewer>rem set JAVA_HOME=c:\jdk1.6.0_12

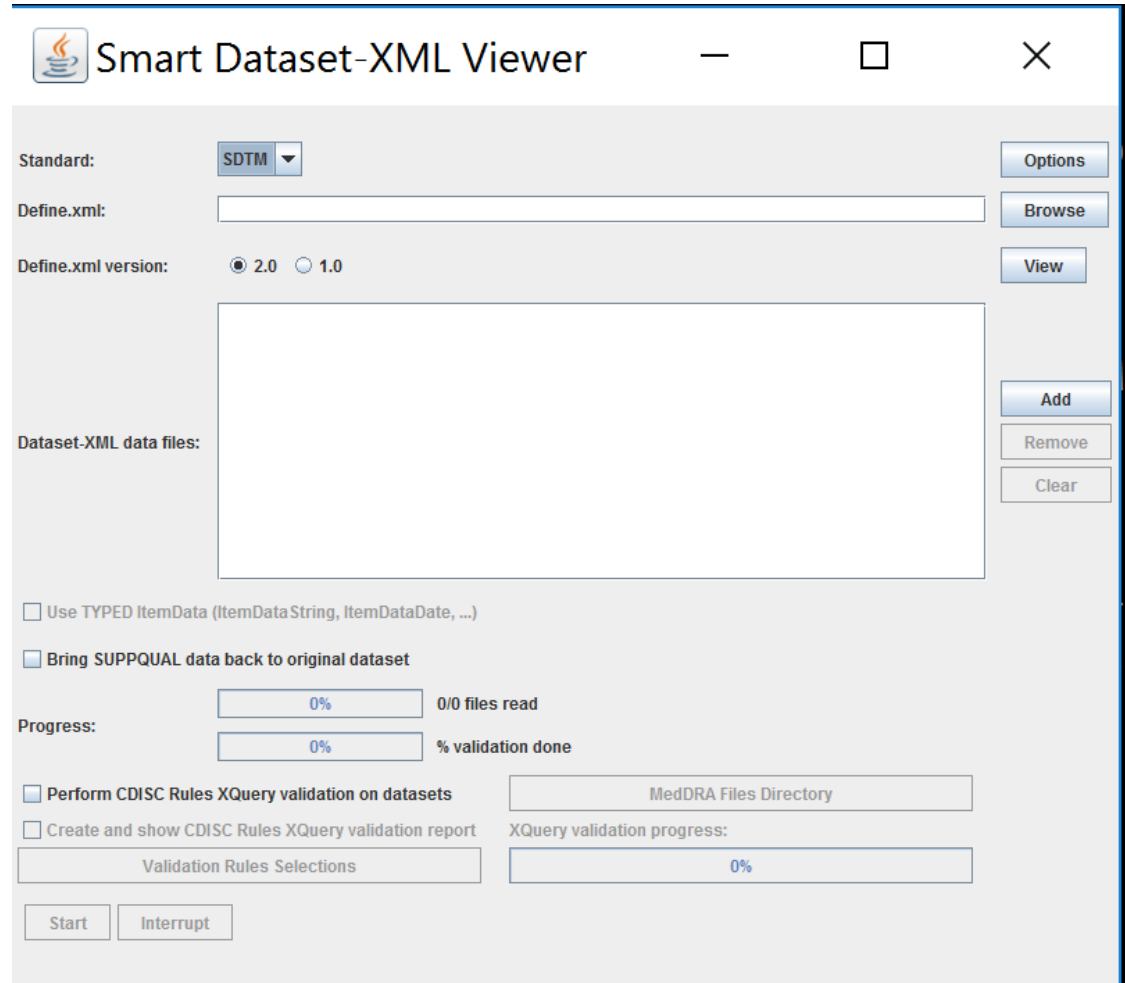
C:\Program Files\Smart_Dataset-XML_Viewer>rem set path=.;\bin;.

C:\Program Files\Smart_Dataset-XML_Viewer>set CLASSPATH=.\Smart_Dataset-XML_Viewer.jar;.\vtd-xml.jar;.\log4j-1.2.13.jar;.\saxon9he.jar;.\saxon9-xqj.jar;.\zip4j_1.3.2.jar;.\jdatepicker-1.3.4.jar;.\jersey-client-1.18.jar;.\jersey-core-1.18.jar;.\jsr311-api-1.1.1.jar;.\asm-3.1.jar

C:\Program Files\Smart_Dataset-XML_Viewer>java -Xms256M -Xmx1200M -cp .\Smart_Dataset-XML_Viewer.jar;.\vtd-xml.jar;.\log4j-1.2.13.jar;.\saxon9he.jar;.\saxon9-xqj.jar;.\zip4j_1.3.2.jar;.\jdatepicker-1.3.4.jar;.\jersey-client-1.18.jar;.\jersey-core-1.18.jar;.\jsr311-api-1.1.1.jar;.\asm-3.1.jar edu.fhjoanneum.ehealth.smartdatasetxmlviewer.gui.GUI
LogLevel from properties.dat = INFO
logging goes to: logs\Smart_Dataset-XML_Viewer_LOG_2017_2_13_13-45-37.txt
ERROR: Cannot create log file logs\Smart_Dataset-XML_Viewer_LOG_2017_2_13_13-45-37.txt
changing logging level to "INFO"
# of program arguments = 0
```

# Smart Dataset XML Viewer

... And opens the application:



# Smart Dataset XML Viewer

Step 3: enter define.xml and domain based datasets – press start.

The screenshot shows the 'Smart Dataset-XML Viewer' application window. The title bar contains the application name and standard window controls (minimize, maximize, close). The main interface is divided into several sections:

- Standard:** A dropdown menu currently set to 'SDTM'.
- Define.xml:** A text input field for the XML file path.
- Define.xml version:** Two radio buttons, with '2.0' selected and '1.0' unselected.
- Dataset-XML data files:** A large empty rectangular area for displaying data files.

On the right side of the interface, there is a vertical column of buttons: 'Options', 'Browse', 'View', 'Add', 'Remove', and 'Clear'.



# Smart Dataset XML Viewer

Step 4: review the data and the results of the validation.

DM	RELREC	CO	AE	CM	DS	EX	LB	MH	QS	SC	SE	SV	TA	TE	TI	TS	TV	VS
STUDYID	DOMAIN	USUBJID	SUBJID	RFSTDTCT	RFENDTCT	RFXSTDTCT	RFXENDTCT	RFICDTC	RFPENDT									
CDISCPIL...	DM	01-701-1015	1015		2014-01-02		2014-07-02		2014-01-02		2014-07-02							2014-07-0
CDISCPIL...	DM	01-701-1023	1023		2012-08-05		2012-09-0a		2012-08-02		2012-09-01							2013-02-1
CDISCPIL...	DM	01-701-1028	1028		2013-07-19		2014-01-14		2013-07-19		2014-01-14							2014-01-1
CDISCPIL...	DM	01-701-1033	1033		2014-03-18		2014-04-14		2014-03-18		2014-03-31							2014-09-1
CDISCPIL...	DM	01-701-1034	1034		2014-07-01		2014-12-30		2014-07-01		2014-12-30							2014-12-3
CDISCPIL...	DM	01-701-1047	1047		2013-02-12		2013-03-32		2013-02-12		2013-03-09							2013-07-2
CDISCPIL...	DM	01-701-1057	1057															2013-12-2
CDISCPIL...	DM	01-701-1097	1097		2014-01-01		2014-07-09		2014-01-01		2014-07-09							2014-07-0
CDISCPIL...	DM	01-701-1111	1111		2012-09-07		2012-09-17		2012-09-07		2012-09-16							2013-02-2
CDISCPIL...	DM	01-701-1115	1115		2012-11-30		2013-01-23		2012-11-30		2013-01-23							2013-05-2
CDISCPIL...	DM	01-701-1118	1118		2014-03-12		2014-09-09		2014-03-12		2014-09-09							2014-09-0
CDISCPIL...	DM	01-701-1130	1130		2014-02-15		2014-08-16		2014-02-15		2014-08-16							2014-08-1
CDISCPIL...	DM	01-701-1133	1133		2012-10-28		2013-04-29		2012-10-28		2013-04-28							2013-04-2
CDISCPIL...	DM	01-701-1145	1145															2013-09-1
CDISCPIL...	DM	01-701-1015	1146		2013-05-20		2013-06-30		2013-05-20		2013-06-26							2013-07-1
CDISCPIL...	DM	01-701-1148	1148		2013-08-23		2014-02-20		2013-08-23		2014-02-20							2014-02-2
CDISCPIL...	DM	01-701-1162	1162		ERROR: Duplicate USUBJID in DM dataset (USUBJID)												2014-03-16	2014-04-0
CDISCPIL...	DM	01-701-1176	1176															2013-04-1
CDISCPIL...	DM	01-701-1180	1180		2013-02-12		2013-03-23		2013-02-12		2013-03-18							2012-09-3
CDISCPIL...	DM	01-701-1181	1181		2013-12-05		2013-12-12		2013-12-05		2013-12-09							2013-04-0
CDISCPIL...	DM	01-701-1188	1188		2013-02-15		2013-03-25		2013-02-15		2013-03-24							2014-05-2
CDISCPIL...	DM	01-701-1192	1192		2012-07-22		2013-01-20		2012-07-22		2013-01-20							2013-08-0
CDISCPIL...	DM	01-701-1203	1203		2013-02-02		2013-08-03		2013-02-02		2013-08-03							2013-01-2
CDISCPIL...	DM	01-701-1211	1211		2012-11-15		2013-01-14		2012-11-15		2013-01-12							2013-08-0
CDISCPIL...	DM	01-701-1234	1234		2013-03-30		2013-09-22		2013-03-30		2013-09-22							2013-01-1
CDISCPIL...	DM	01-701-1239	1239		2014-01-11		2014-07-11		2014-01-11		2014-07-10							2013-09-2
CDISCPIL...	DM	01-701-1240	1240															2013-09-2

➔ demnächst in diesem Kino...

Or @home on: <https://sourceforge.net/projects/smart-sds-xml-viewer/?source=navbar>